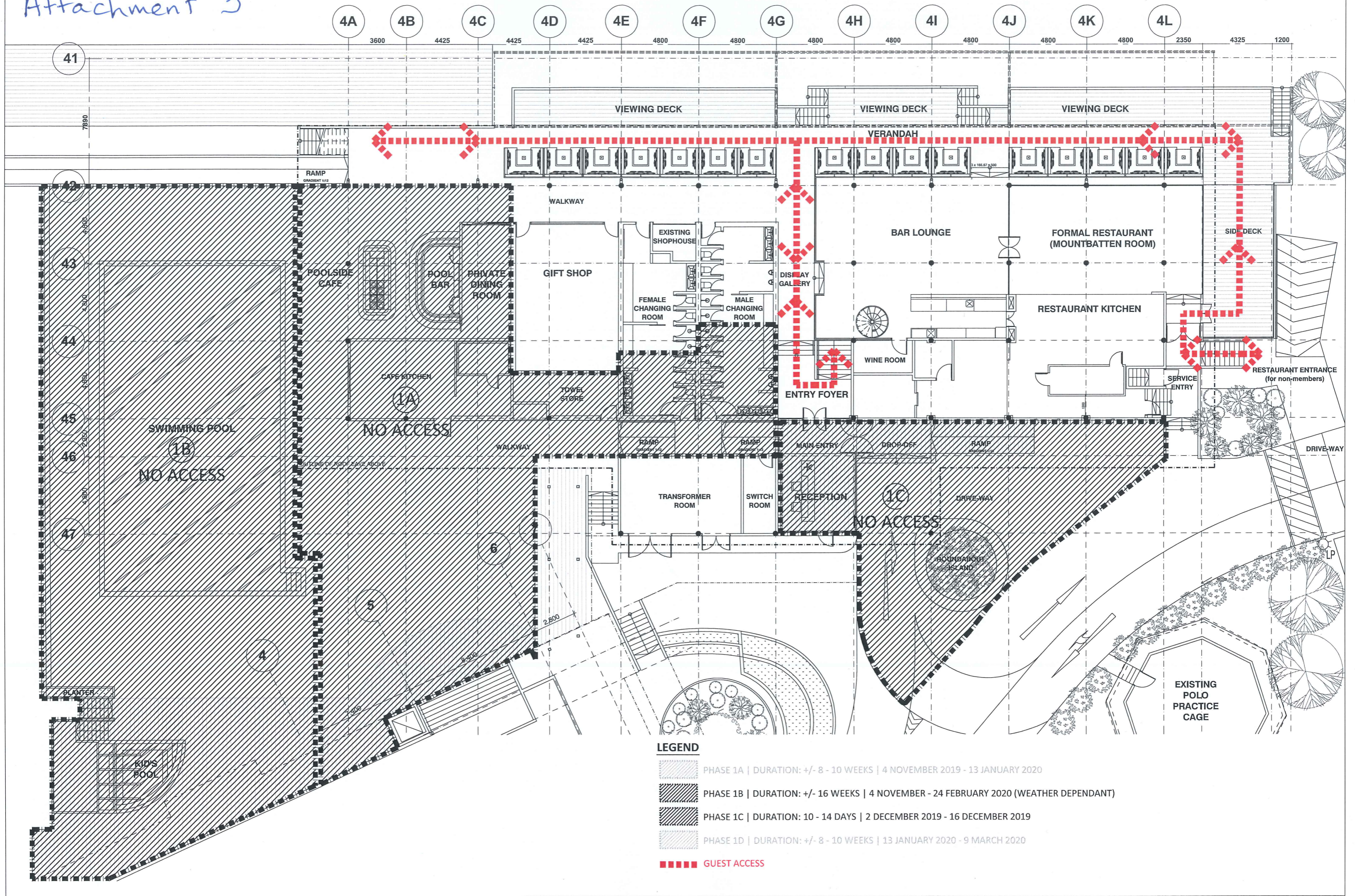







Attachment 3



LEGEND

-  PHASE 1A | DURATION: +/- 8 - 10 WEEKS | 4 NOVEMBER 2019 - 13 JANUARY 2020
-  PHASE 1B | DURATION: +/- 16 WEEKS | 4 NOVEMBER - 24 FEBRUARY 2020 (WEATHER DEPENDANT)
-  PHASE 1C | DURATION: 10 - 14 DAYS | 2 DECEMBER 2019 - 16 DECEMBER 2019
-  PHASE 1D | DURATION: +/- 8 - 10 WEEKS | 13 JANUARY 2020 - 9 MARCH 2020
-  GUEST ACCESS